

# SOUTH EAST LEADERSHIP ACADEMY DEVELOPMENT OPPORTUNITIES – SEPTEMBER 2023



At the South East Leadership Academy we have commissioned, curated and categorised a range of support to help nourish, retain and engage our people. See below for our current and upcoming offers. For all sessions please click on the links below or visit <https://se.leadershipacademy.nhs.uk/> or [england.selll@nhs.net](mailto:england.selll@nhs.net)

## LEADERSHIP DEVELOPMENT & COACHING/MENTORING

26 <sup>th</sup> Sept	<a href="#">Handling the inner critic – Coaching CPD webinar</a>
20 <sup>th</sup> Sept	<a href="#">Coach supervision with Jane Hartley</a>

## OFFERS FOR PRIMARY CARE

14 <sup>th</sup> Sept	<a href="#">Edward Jenner Programme Wrap-around Support</a>
27 <sup>th</sup> Sept	<a href="#">Embedding Equality, Diversity &amp; inclusion into Primary Care</a>
28 <sup>th</sup> Sept	<a href="#">Embedding Equality, Diversity &amp; Inclusion into Primary Care</a>
29 <sup>th</sup> Sept	<a href="#">Embedding Equality, Diversity &amp; Inclusion into Primary Care</a>

### Key

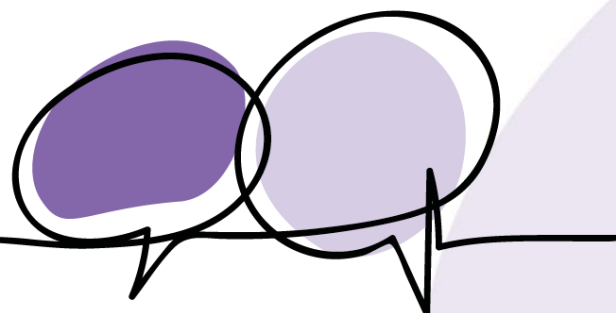
	Open to all (inc NHS, social care, primary care)
	Open to specific groups

## SYSTEMS LEADERSHIP

Toolkit	<a href="#">System leadership behaviours – toolkit</a>
System Leadership Card Toolkit	<a href="#">System Leadership Behaviour Cards</a>
E Learning Module	<a href="#">Foundations in System Leadership</a>
Online via FutureLearn	<a href="#">Working with People and Communities to Improve Health Outcomes</a>
System OD and Transformation	<a href="#">System OD and Transformation Learning Modules - Leadership Learning Zone</a>
21 <sup>st</sup> Sept	<a href="#">Cross-Functional Leadership: Integrating Perspectives in Health and Social Care (Cohort 3)</a>

## GRADUATE MANAGEMENT TRAINING SCHEME

For anyone wanting to join please email <a href="mailto:gmts.selll@leadershipacademy.nhs.uk">gmts.selll@leadershipacademy.nhs.uk</a>	
4 <sup>th</sup> – 5 <sup>th</sup> September	GMTS National Welcome Event
12 <sup>th</sup> September	GMTS South East Regional Welcome Event
6 <sup>th</sup> , 14 <sup>th</sup> , 20 <sup>th</sup> September	Programme and Placement Manager Training - Please email <a href="mailto:gmts.selll@leadershipacademy.nhs.uk">gmts.selll@leadershipacademy.nhs.uk</a> for further details



We each have  
**a voice that counts**

# SOUTH EAST LEADERSHIP ACADEMY DEVELOPMENT OPPORTUNITIES – OCTOBER 2023



At the South East Leadership Academy we have commissioned, curated and categorised a range of support to help nourish, retain and engage our people. See below for our current and upcoming offers. For all sessions please click on the links below or visit <https://se.leadershipacademy.nhs.uk/> or [england.selll@nhs.net](mailto:england.selll@nhs.net)

## LEADERSHIP DEVELOPMENT & COACHING/MENTORING

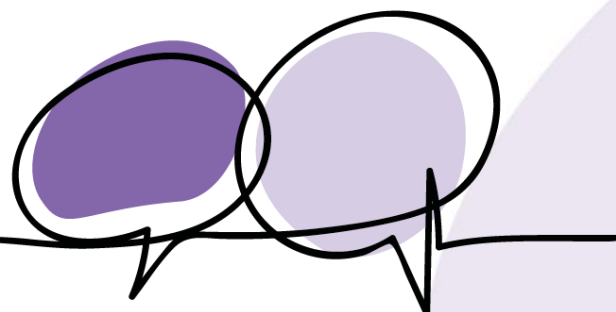
12th Oct	<a href="#">Coaching for Improvement Programme – South East Leadership Academy</a>
18th Oct	<a href="#">Return to Coaching session</a>
19th Oct	<a href="#">Uncertainty and challenge – Coaching CPD webinar</a>

## OFFERS FOR PRIMARY CARE

Online	<a href="#">Developing Outstanding Leadership in Primary Care</a>
LLZ	<a href="#">Leading Transition in Primary Care</a>

### Key

- Open to all (inc NHS, social care, primary care)
- Open to specific groups



We each have  
**a voice that counts**

## SYSTEMS LEADERSHIP

Toolkit	<a href="#">System leadership behaviours – toolkit</a>
Information	<a href="#">Executive Suite</a>
Information	<a href="#">Personalised Executive Support</a>
Online via FutureLearn	<a href="#">Working with People and Communities to Improve Health Outcomes</a>
3rd October	<a href="#">SE Paramedics Leadership Workshop</a>
5th October	<a href="#">Leading Anchor Organisations Masterclass - Leadership Review</a>
19th October	<a href="#">Systems Thinking Clinic</a>
26th October	<a href="#">Leading Anchor Organisations Masterclass -The Power of Procurement</a>
System Leadership Behaviours Self Assessment	<a href="#">System Leadership Behaviours – North West Leadership Academy</a>
System OD and Transformation	<a href="#">System OD and Transformation Learning Modules - Leadership Learning Zone</a>

## GRADUATE MANAGEMENT TRAINING SCHEME

5th, 26th Oct	Programme and Placement Manager Training - Please email <a href="mailto:gmts.selll@leadershipacademy.nhs.uk">gmts.selll@leadershipacademy.nhs.uk</a> for further details
19th Oct	GMTS Programme & Placement Managers Network – Please email <a href="mailto:gmts.selll@leadershipacademy.nhs.uk">gmts.selll@leadershipacademy.nhs.uk</a> for further details
For anyone wanting to join please email <a href="mailto:gmts.selll@leadershipacademy.nhs.uk">gmts.selll@leadershipacademy.nhs.uk</a>	

# SOUTH EAST LEADERSHIP ACADEMY DEVELOPMENT OPPORTUNITIES – NOVEMBER 2023



At the South East Leadership Academy we have commissioned, curated and categorised a range of support to help nourish, retain and engage our people. See below for our current and upcoming offers. For all sessions please click on the links below or visit <https://se.leadershipacademy.nhs.uk/> or [england.selll@nhs.net](mailto:england.selll@nhs.net)

## LEADERSHIP DEVELOPMENT & COACHING/MENTORING

Online	<a href="#">Inspiration Library</a>
Download	<a href="#">Thriving in Uncertain and Complex Times</a>
Online	<a href="#">Bitesize Learning</a> including Leadership in Systems, Resilience, Team Dynamics and many more topics
15th Nov	<a href="#">Coaching for Improvement Programme – South East Leadership Academy</a>

## OFFERS FOR PRIMARY CARE

Online	<a href="#">Developing Outstanding Leadership in Primary Care</a>
LLZ	<a href="#">Leading Transition in Primary Care</a>

### Key

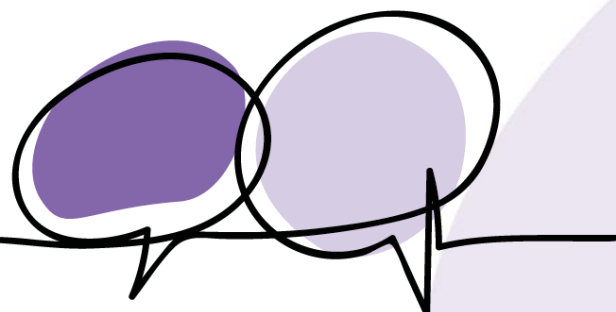
	Open to all (inc NHS, social care, primary care)
	Open to specific groups

## SYSTEMS LEADERSHIP

Toolkit	<a href="#">System leadership behaviours – toolkit</a>
Information	<a href="#">Executive Suite</a>
Information	<a href="#">Personalised Executive Support</a>
Online via FutureLearn	<a href="#">Working with People and Communities to Improve Health Outcomes</a>
LLZ	<a href="#">Systems and Relational Leadership</a>
System Leadership Behaviours Self Assessment	<a href="#">System Leadership Behaviours – North West Leadership Academy</a>
System OD and Transformation	<a href="#">System OD and Transformation Learning Modules - Leadership Learning Zone</a>
23 <sup>rd</sup> November	<a href="#">SE Paramedic Leadership Workshop</a>

## GRADUATE MANAGEMENT TRAINING SCHEME

For anyone wanting to join please email [gmts.selll@leadershipacademy.nhs.uk](mailto:gmts.selll@leadershipacademy.nhs.uk)



We each have  
**a voice that counts**



## ONGOING OFFERS – AVAILABLE THROUGHOUT THE YEAR

Coaching & Mentoring	<a href="#">Bitesize Coaching</a> An opportunity to process experiences, develop coping skills and explore strategies to navigate challenging circumstances
	<a href="#">Access to a Coach or Mentor</a> Coaching and mentoring is an inclusive, free offering available to all.
	<a href="#">Coaching for Inclusion and Allyship</a> A coaching opportunity to support working with difference and supporting inclusivity and change, contributing to an inclusive culture, and developing self-awareness and personal development.
	<a href="#">Executive Coaching – Expert Coaching</a> This one to one focused and bespoke relationship is often perceived as the most effective development intervention that a senior leader can access.
	<a href="#">Inclusive Leadership in Healthcare</a> Develop inclusive and compassionate leadership skills to ensure diversity and equality in the health and care industry.
	<a href="#">Bitesize Learning – Shorts &amp; Bites</a> Our bitesize learning interventions are short, sharp and agile, with the ability to be accessed whenever its convenient for you.
	<a href="#">Looking after our people</a> Concise tips, resources and signposting to help you find the right support for you and your teams for right now and beyond.
	<a href="#">Edward Jenner</a> Refreshed: Your first port of call if you're looking to build a strong foundation of leadership skills
	<a href="#">Career Resource Portal</a> This is designed specifically for Leaders to help support you in your career development. The tools and resources offered are through Career Assessments, Aptitude tests, E-Learning paths, Interview simulators, Elevator Pitch Builders and Aptitude tests to name a few.

## KEEP AN EYE OUT FOR

[National Programmes -](#)  
 NHS Leadership Academy  
 Apprenticeships

If you are interested in an apprenticeship, please access the information on this webpage, which outlines how the apprentice is structured, what it covers and the application process. To ensure access to funding and approval to process the application, you need to speak to your own apprenticeship and or leadership lead in your own organisation.

[Train to be an OD Virtual Mentor](#) - We are building a national OD virtual mentoring network where OD practitioners and those working in change and transformation can access an experienced OD mentor, using a virtual process

## WHAT ELSE?

### **Our System OD Work**

We are currently supporting a number of ICS's with facilitated support to develop leadership for effective provider collaboratives and to develop clinically driven cultures. Please contact [beth.hill@leadershipacademy.nhs.uk](mailto:beth.hill@leadershipacademy.nhs.uk) to find out more

### **Collaborative Practice**

We are about to open applications for a further 12 GP Practices across the South East for a second wave through the Innovative [Collaborative Practice](#) programme to find a new way of organising to manage demand and improve outcomes. To find out more about the programme and understand how you can get involved in the lessons coming out from it, please contact [Jayne.beresford@leadershipacademy.nhs.uk](mailto:Jayne.beresford@leadershipacademy.nhs.uk).

### **ICS Collaboration**

We are currently supporting each ICS with local place-based offers and the development of effective Integrated Care Boards and further transition support. Please contact [beth.hill@leadershipacademy.nhs.uk](mailto:beth.hill@leadershipacademy.nhs.uk) to find out more

### **Developing the South East Regional Talent & Leadership Alliance and ICS Talent and Leadership Alliances**

We are working across the region and in each ICS to support collaboration and partnerships that maximise the impact of all of our leadership and talent offers at organisation, place and system. Contact [beth.hill@leadershipacademy.nhs.uk](mailto:beth.hill@leadershipacademy.nhs.uk) to find out more

### **Coaching for System Leaders**

We are finalising a coaching programme to support System Leaders across the South East Region. Please contact [beth.hill@leadershipacademy.nhs.uk](mailto:beth.hill@leadershipacademy.nhs.uk) to find out more.

### **OD Skills for System Leaders**

A new programme just being commissioned for systems leaders who are leading change. The programme is designed to both challenge participants' thinking about their roles as leaders working across systems, whilst also providing these individuals with the confidence to act as 'change consultants' as they engage in system change programmes. The programme is targeted at leaders who will have a transformation or change leadership role. This programme is likely to start in late Autumn. If you would like to know more about this programme, please contact [beth.hill@leadershipacademy.nhs.uk](mailto:beth.hill@leadershipacademy.nhs.uk)

### **Edward Jenner Wrap-Around for receptionists, administrators and aspiring business managers: Learning into Practice**

The opportunity to join a South East peer network of Action Learning sets around the Edward Jenner programme to bring the programme to life in the South East Primary Care context. Monthly action learning sets follow the course of the Edward Jenner Programme over a 6 month period. If you would like to know more about this offer, please email [england.selll@nhs.net](mailto:england.selll@nhs.net)

### **Health and Care Womens Leaders Network**

A strong, united and influential voice for women, embracing the multiple and intersectional identities that the word woman speaks to. Click [here](#) to find out more.

An introduction to leading with kindness and compassion in health and care - [An introduction to leading with kindness and compassion in health and social care | The King's Fund \(kingsfund.org.uk\)](#)