

# SOUTH EAST LEADERSHIP ACADEMY DEVELOPMENT OPPORTUNITIES – OCTOBER 2022



At the South East Leadership Academy we have commissioned, curated and categorised a range of support to help nourish, retain and engage our people. See below for our current and upcoming offers. For all sessions please click on the links below or visit <https://se.leadershipacademy.nhs.uk/>

## LEADERSHIP DEVELOPMENT & COACHING/MENTORING

INDIVIDUAL DATES LISTED BELOW

3 <sup>rd</sup> Oct	<a href="#">Black History for beginners: Ancients to Present</a>
4 <sup>th</sup> Oct	<a href="#">The Benin Trust – Unsung African Heroines</a>
4 <sup>th</sup> Oct	<a href="#">Leadership Espresso: The Art of Being Brilliant</a>
11 <sup>th</sup> Oct	<a href="#">#IwillAccelerate: Session 2 Brand You</a>
11 <sup>th</sup> Oct	<a href="#">Talking Systems – Innovation as business as usual</a>
12 <sup>th</sup> Oct	<a href="#">Black Ancestry – The Truth about what’s in a name</a>
13 <sup>th</sup> Oct	<a href="#">Black History Month – poetry workshop with Zita Holbourne</a>
17 <sup>th</sup> Oct	<a href="#">Black History Month – Mental Health, impact of Windrush</a>
19 <sup>th</sup> Oct	<a href="#">Coming Back to Coaching CPD</a>
19 <sup>th</sup> Oct	<a href="#">Coaching Supervision with Nicola Arnold</a>
20 <sup>th</sup> Oct	<a href="#">Black History Month – The ‘model’ black</a>
24 <sup>th</sup> Oct	<a href="#">Black History Month – 100 Great Black Britons</a>
26 <sup>th</sup> Oct	<a href="#">Leadership Espresso – Conversations to Build Resilience</a>
27 <sup>th</sup> Oct	<a href="#">Leadership Espresso: Unpacking Power</a>
EOI Open	<a href="#">Population Health Management</a>

## SYSTEMS LEADERSHIP

CLICK ON THE PROGRAMME LINK FOR THE FULL LIST OF DATES

<a href="#">Expert facilitation – ICS transformation leaders</a>
<a href="#">System leadership behaviours – toolkit</a>
<a href="#">Executive Suite</a>
<a href="#">Action Learning Set – ICS transformation leaders</a>
<a href="#">Personalised Executive Support</a>
<a href="#">Talking Systems 2022-23</a>

## OFFERS FOR PRIMARY CARE

EOI Open	<a href="#">Population Health Management</a>
6 <sup>th</sup> Oct	<a href="#">Leading Transition in Primary Care: Articulating our voice in the New System</a>
12 <sup>th</sup> Oct	<a href="#">Leading Together: Support and Challenge for PCN Managers</a>
19 <sup>th</sup> Oct	<a href="#">Primary Care Commissioners: Getting ready for patients to have access to their future data</a>

## GRADUATE MANAGEMENT TRAINING SCHEME

13 <sup>th</sup> Oct	GMTS Programme and Placement Manager Network Meeting – For anyone wanting to join please email us at <a href="mailto:gmts.sell@leadershipacademy.nhs.uk">gmts.sell@leadershipacademy.nhs.uk</a>
----------------------	---

Key

Open to all (inc NHS, social care, primary care)

Open to specific groups

We are **always learning**

# SOUTH EAST LEADERSHIP ACADEMY DEVELOPMENT OPPORTUNITIES – NOVEMBER 2022

At the South East Leadership Academy we have commissioned, curated and categorised a range of support to help nourish, retain and engage our people. See below for our current and upcoming offers. For all sessions please click on the links below or visit <https://se.leadershipacademy.nhs.uk/> or [england.selll@nhs.net](mailto:england.selll@nhs.net)



## LEADERSHIP DEVELOPMENT & COACHING/MENTORING

INDIVIDUAL DATES LISTED BELOW

3 <sup>rd</sup> Nov	<a href="#">Coaching Supervision with Fenella Trevillon</a>
3 <sup>rd</sup> Nov	<a href="#">Effective Mentoring Training for Senior Leaders &amp; Aspirant Directors</a>
4 <sup>th</sup> Nov	<a href="#">Ethical Dilemma Coaching CPD</a>
8 <sup>th</sup> Nov	<a href="#">Coaching Skills Lab CPD</a>
8 <sup>th</sup> Nov	<a href="#">Virtual Action Learning Set (VALS) Supervision</a>
9 <sup>th</sup> Nov	<a href="#">Leadership Espresso: LGBTQ Identities and Mental Health</a>
9 <sup>th</sup> Nov	<a href="#">South East OD and EDI Network – Exploring Systems</a>
9 <sup>th</sup> Nov	<a href="#">Virtual group supervision for coaches with Will Jackson</a>
10 <sup>th</sup> Nov	<a href="#">#willAccelerate: Session 3 Overcoming Imposter Syndrome</a>
10 <sup>th</sup> Nov	<a href="#">Leadership Espresso – Sustaining a good team culture</a>
15 <sup>th</sup> Nov	<a href="#">Leadership Espresso: Understanding intersectionality &amp; minority stress</a>
17 <sup>th</sup> Nov	<a href="#">Leadership Espresso: Trans inclusion</a>
17 <sup>th</sup> Nov	<a href="#">Maximising your impact, building confidence and gravitas</a>
24 <sup>th</sup> Nov	<a href="#">Leadership Espresso: Unpacking Power</a>
22 <sup>nd</sup> Nov	<a href="#">Leadership Espresso – Leading for an Inclusive Culture – Workshop One: Leading with Cultural Sensitivity</a>
24 <sup>th</sup> Nov	<a href="#">Leadership Espresso: Unpacking Power</a>
30 <sup>th</sup> Nov	<a href="#">Coaching in a Hybrid Space</a>
30 <sup>th</sup> Nov	<a href="#">Coaching Supervision with Beth Hill</a>

## SYSTEMS LEADERSHIP

CLICK ON THE PROGRAMME LINK FOR THE FULL LIST OF DATES

<a href="#">Systems Workshop: Shining A Light on Co-production</a>
<a href="#">Expert facilitation – ICS transformation leaders</a>
<a href="#">System leadership behaviours – toolkit</a>
<a href="#">Executive Suite</a>
<a href="#">Action Learning Set – ICS transformation leaders</a>
<a href="#">Personalised Executive Support</a>
<a href="#">Talking Systems 2022-23</a>
<a href="#">Leading Transformation for Integrated Care 2022-23</a>

## OFFERS FOR PRIMARY CARE

16 <sup>th</sup> Nov	<a href="#">Leading Together: Support and Challenge for PCN Managers</a>
EOI Open	<a href="#">Population Health Management</a>

## GRADUATE MANAGEMENT TRAINING SCHEME

Dates TBC	Hosting a GMTS trainee in 2023 – Information Webinars
-----------	---

Key

Open to all (inc NHS, social care, primary care)

Open to specific groups

# SOUTH EAST LEADERSHIP ACADEMY DEVELOPMENT OPPORTUNITIES – DECEMBER 2022

At the South East Leadership Academy we have commissioned, curated and categorised a range of support to help nourish, retain and engage our people. See below for our current and upcoming offers. For all sessions please click on the links below or visit <https://se.leadershipacademy.nhs.uk/> or [england.selll@nhs.net](mailto:england.selll@nhs.net)



## LEADERSHIP DEVELOPMENT & COACHING/MENTORING

INDIVIDUAL DATES LISTED BELOW

6 <sup>th</sup> Dec	<a href="#">Leadership Espresso: Exploring workplace conflict and how mediation can help</a>
5 <sup>th</sup> Dec	<a href="#">Career Coaching CPD</a>
6 <sup>th</sup> Dec	<a href="#">Talking Systems – Network interventions to reduce race and gender bias in medicine</a>
13 <sup>th</sup> Dec	<a href="#">Leadership Espresso – Leading for an Inclusive Culture – Workshop Two: Leading Inclusively and Appreciatively</a>
15 <sup>th</sup> Dec	<a href="#">Coaching supervision with Kate Bones</a>
16 <sup>th</sup> Dec	<a href="#">Mentoring for Wellbeing</a>

## SYSTEMS LEADERSHIP

CLICK ON THE PROGRAMME LINK FOR THE FULL LIST OF DATES

<a href="#">Expert facilitation – ICS transformation leaders</a>
<a href="#">System leadership behaviours – toolkit</a>
<a href="#">Executive Suite</a>
<a href="#">Action Learning Set – ICS transformation leaders</a>
<a href="#">Personalised Executive Support</a>
<a href="#">Talking Systems 2022-23</a>
<a href="#">Leading Transformation for Integrated Care 2022-23</a>

## OFFERS FOR PRIMARY CARE

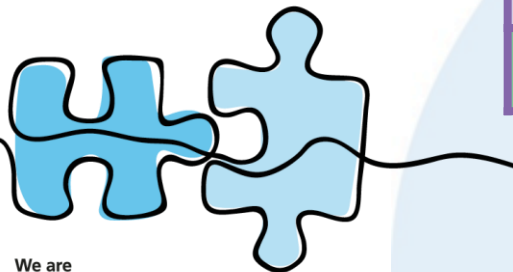
13 <sup>th</sup> Dec	<a href="#">Leading Together: Support and Challenge for PCN Managers</a>
----------------------	--

## GRADUATE MANAGEMENT TRAINING SCHEME

Dates TBC	Hosting a GMTS trainee in 2023 – Information Webinars
-----------	---

### Key

	Open to all (inc NHS, social care, primary care)
	Open to specific groups



We are  
**a team**

# SOUTH EAST LEADERSHIP ACADEMY DEVELOPMENT OPPORTUNITIES – JANUARY 2023

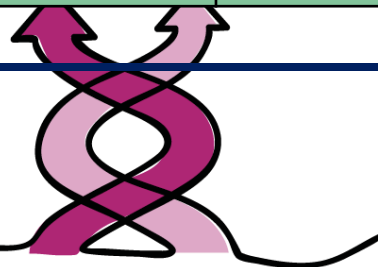
At the South East Leadership Academy we have commissioned, curated and categorised a range of support to help nourish, retain and engage our people. See below for our current and upcoming offers. For all sessions please click on the links below or visit <https://se.leadershipacademy.nhs.uk/> or [england.selll@nhs.net](mailto:england.selll@nhs.net)



## LEADERSHIP DEVELOPMENT & COACHING/MENTORING

INDIVIDUAL DATES LISTED BELOW

26th Jan	<a href="#">Leadership Espresso: Unpacking Power</a>
16th Jan	<a href="#">Leadership Espresso: Rising Stronger from Mental Health to Mental Wealth</a>
25th Jan	<a href="#">Talking Systems – Rethinking metrics in light of systems working and complexity</a>
11th Jan	<a href="#">Virtual Action Learning Set (VALS) Community of Practice Supervision</a>
12th Jan	<a href="#">Coaching for Improvement Programme – South East Leadership Academy</a>
17th & 18th Jan	<a href="#">Women's Leadership Development Programme (ethnic minority)</a>
18th Jan	<a href="#">Leadership Espresso: Developing Recruitment – Identifying Talent</a>
20th Jan	<a href="#">Coaching Supervision with Nicola Howells</a>
20th Jan	<a href="#">Coaching Supervision with Rebecca Burden</a>
26th Jan	<a href="#">Leadership Espresso: Unpacking Power</a>



We work  
**flexibly**

Key	
	Open to all (inc NHS, social care, primary care)
	Open to specific groups

## SYSTEMS LEADERSHIP

CLICK ON THE PROGRAMME LINK FOR THE FULL LIST OF DATES

<a href="#">Expert facilitation – ICS transformation leaders</a>
<a href="#">System leadership behaviours – toolkit</a>
<a href="#">Executive Suite</a>
<a href="#">Action Learning Set – ICS transformation leaders</a>
<a href="#">Personalised Executive Support</a>
<a href="#">Talking Systems 2022-23</a>
<a href="#">Leading Transformation for Integrated Care 2022-23</a>

## OFFERS FOR PRIMARY CARE

11th Jan	<a href="#">Leading Together: Support &amp; Challenge for PCN Managers</a>
EOI Open	<a href="#">Population Health Management</a>
24th Jan	<a href="#">Leading Transition in Primary Care: Coping with today and planning for tomorrow</a>

## GRADUATE MANAGEMENT TRAINING SCHEME

19th Jan	GMTS Programme & Placement Managers Network – For anyone wanting to join please email us at <a href="mailto:gmts.selll@leadershipacademy.nhs.uk">gmts.selll@leadershipacademy.nhs.uk</a>
Dates TBC	Hosting a GMTS trainee in 2023 – Information Webinars
Dates TBC	GMTS Trainee and Alumni Network Events



## ONGOING OFFERS – AVAILABLE THROUGHOUT THE YEAR

<b>Coaching &amp; Mentoring</b>	<a href="#">Bitesize Coaching</a> An opportunity to process experiences, develop coping skills and explore strategies to navigate challenging circumstances
	<a href="#">Access to a Coach or Mentor</a> Coaching and mentoring is an inclusive, free offering available to all.
	<a href="#">Coaching for Inclusion and Allyship</a> A coaching opportunity to support working with difference and supporting inclusivity and change, contributing to an inclusive culture, and developing self-awareness and personal development.
	<a href="#">Executive Coaching – Expert Coaching</a> This one to one focused and bespoke relationship is often perceived as the most effective development intervention that a senior leader can access.
<b>Leadership Development</b>	<a href="#">Leadership Learning Zone</a> Builds core management and leadership skills and takes a learner on an interactive exploration of key areas of leadership development.
	<a href="#">Inclusive Leadership in Healthcare</a> Develop inclusive and compassionate leadership skills to ensure diversity and equality in the health and care industry.
	<a href="#">Bitesize Learning – Shorts &amp; Bites</a> Our bitesize learning interventions are short, sharp and agile, with the ability to be accessed whenever its convenient for you.
	<a href="#">Looking after our people</a> Concise tips, resources and signposting to help you find the right support for you and your teams for right now and beyond.
	<a href="#">Edward Jenner</a> Refreshed: Your first port of call if you're looking to build a strong foundation of leadership skills

## KEEP AN EYE OUT FOR

[National Programmes](#) - NHS Leadership Academy Apprenticeships  
 If you are interested in an apprenticeship, please access the information on this webpage, which outlines how the apprentice is structured, what it covers and the application process. To ensure access to funding and approval to process the application, you need to speak to your own apprenticeship and or leadership lead in your own organisation.

[Train to be an OD Virtual Mentor](#) - We are building a national OD virtual mentoring network where OD practitioners and those working in change and transformation can access an experienced OD mentor, using a virtual process

## WHAT ELSE?

### **Our System OD Work**

We are currently supporting a number of ICS's with facilitated support to develop leadership for effective provider collaboratives and to develop clinically driven cultures. Please contact [beth.hill@leadershipacademy.nhs.uk](mailto:beth.hill@leadershipacademy.nhs.uk) to find out more

### **Collaborative Practice**

We are about to open applications for a further 12 GP Practices across the South East for a second wave through the Innovative [Collaborative Practice](#) programme to find a new way of organising to manage demand and improve outcomes. To find out more about the programme and understand how you can get involved in the lessons coming out from it, please contact [Jayne.beresford@leadershipacademy.nhs.uk](mailto:Jayne.beresford@leadershipacademy.nhs.uk).

### **ICS Collaboration**

We are currently supporting each ICS with local place-based offers and the development of effective Integrated Care Boards and further transition support. Please contact [ali.jennings@leadershipacademy.nhs.uk](mailto:ali.jennings@leadershipacademy.nhs.uk) to find out more

### **Developing the South East Regional Talent & Leadership Alliance and ICS Talent and Leadership Alliances**

We are working across the region and in each ICS to support collaboration and partnerships that maximise the impact of all of our leadership and talent offers at organisation, place and system level. Contact [ali.jennings@leadershipacademy.nhs.uk](mailto:ali.jennings@leadershipacademy.nhs.uk) to find out more

### **Coaching for System Leaders**

We are finalising a coaching programme to support System Leaders across the South East Region. Please contact [beth.hill@leadershipacademy.nhs.uk](mailto:beth.hill@leadershipacademy.nhs.uk) to find out more.

### **OD Skills for System Leaders**

A new programme just being commissioned for systems leaders who are leading change. The programme is designed to both challenge participants' thinking about their roles as leaders working across systems, whilst also providing these individuals with the confidence to act as 'change consultants' as they engage in system change programmes. The programme is targeted at leaders who will have a transformation or change leadership role. This programme is likely to start in late Autumn. If you would like to know more about this programme, please contact [beth.hill@leadershipacademy.nhs.uk](mailto:beth.hill@leadershipacademy.nhs.uk)

### **Edward Jenner Wrap-Around for receptionists, administrators and aspiring business managers: Learning into Practice**

The opportunity to join a South East peer network of Action Learning sets around the Edward Jenner programme to bring the programme to life in the South East Primary Care context. Monthly action learning sets follow the course of the Edward Jenner Programme over a 6 month period. If you would like to know more about this offer, please email [england.selll@nhs.net](mailto:england.selll@nhs.net)