

# SOUTH EAST LEADERSHIP ACADEMY DEVELOPMENT OPPORTUNITIES – MAY 2022



At the South East Leadership Academy we have commissioned, curated and categorised a range of support to help nourish, retain and engage our people. See below for our current and upcoming offers. For all sessions please click on the links below or visit <https://se.leadershipacademy.nhs.uk/>

## LEADERSHIP DEVELOPMENT & COACHING/MENTORING

12 <sup>th</sup> May	<a href="#">Espresso: Wellbeing</a>
17 <sup>th</sup> May	<a href="#">Espresso: Leading during challenging times</a>
17 <sup>th</sup> May	<a href="#">Maternity Support: Understanding the Psychology of Now</a>
17 <sup>th</sup> May	<a href="#">Effective Mentor Training</a>
17 <sup>th</sup> May	<a href="#">South East Regional OD network – Listening &amp; Engagement Event</a>
19 <sup>th</sup> May	<a href="#">Espresso: Disability inclusion masterclass</a>
20 <sup>th</sup> May	<a href="#">Coaching Virtually &amp; Confidently CPD</a>
24 <sup>th</sup> May	<a href="#">Espresso: Supporting you with meaningful mediation skills</a>

## SYSTEMS LEADERSHIP

<a href="#">Expert facilitation – ICS transformation leaders</a>
<a href="#">System leadership behaviours – toolkit</a>
<a href="#">Executive Suite</a>
<a href="#">Action Learning Set – ICS transformation leaders</a>
<a href="#">Personalised Executive Support</a>
<a href="#">Embedding Clinical Leaders into Practice – Applications open</a>

## GRADUATE MANAGEMENT TRAINING SCHEME

13 <sup>th</sup> May	<a href="#">GMTS Trainee &amp; Alumni Networking Event</a>
----------------------	--

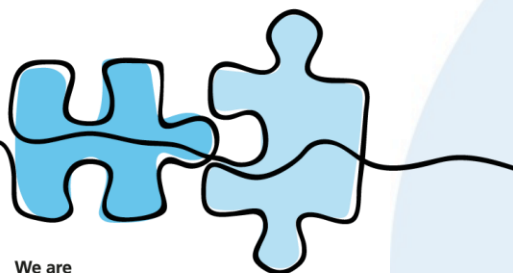
## OFFERS FOR PRIMARY CARE

18 <sup>th</sup> May	<a href="#">Reaching Out Programme: Session 2</a>
18 <sup>th</sup> May	<a href="#">Effective Patient Leadership Programme: Session 2</a>
25 <sup>th</sup> May	<a href="#">Reaching Out &amp; Effective Patient Leadership Programme: Session 3</a>
	<a href="#">Embedded Clinical Leadership in Practice Scheme: Expression of Interest</a>

### Key

Open to all (inc NHS, social care, primary care)

Open to specific groups



We are  
a team

# SOUTH EAST LEADERSHIP ACADEMY DEVELOPMENT OPPORTUNITIES – JUNE 2022

At the South East Leadership Academy we have commissioned, curated and categorised a range of support to help nourish, retain and engage our people. See below for our current and upcoming offers. For all sessions please click on the links below or visit <https://se.leadershipacademy.nhs.uk/>



## LEADERSHIP DEVELOPMENT & COACHING/MENTORING

1st June	<a href="#">South East Regional OD network – Listening &amp; Engagement Event</a>
14th June	<a href="#">South East Regional OD network – Listening &amp; Engagement Event</a>
7 <sup>th</sup> June	<a href="#">Leadership Espresso – Maximising your Impact, Building Confidence and Gravitas</a>
8 <sup>th</sup> June	<a href="#">Leadership Espresso – Bringing teams back together to Reset, Renew &amp; Refocus</a>
22 <sup>nd</sup> June	<a href="#">SELA Faculty Check in</a>
23rd June	<a href="#">Leadership Espresso – Giving and Receiving Effective Feedback</a>
23rd June	<a href="#">'Safe to Fail' in coaching CPD</a>
27 <sup>th</sup> June	<a href="#">Maternity Support: Understanding the Psychology of Now</a>
27th June	<a href="#">Leadership Espresso – Leading during Challenging times</a>

## SYSTEMS LEADERSHIP

<a href="#">Expert facilitation – ICS transformation leaders</a>
<a href="#">System leadership behaviours – toolkit</a>
<a href="#">Executive Suite</a>
<a href="#">Action Learning Set – ICS transformation leaders</a>
<a href="#">Personalised Executive Support</a>
<a href="#">Systems Convening</a>

## OFFERS FOR PRIMARY CARE

8th June	<a href="#">Reaching Out &amp; Effective Patient Leadership Programme: Session 4</a>
15th June	<a href="#">Reaching Out &amp; Effective Patient Leadership Programme: Session 5</a>

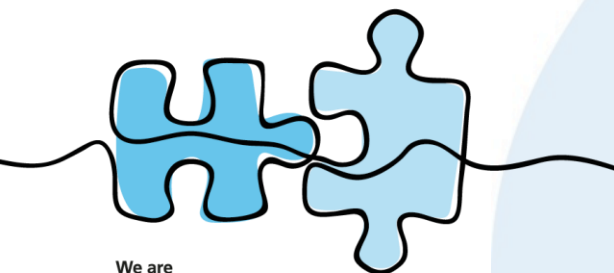
## GRADUATE MANAGEMENT TRAINING SCHEME

7th June	<a href="#">Programme &amp; Placement Manager Refresher Training</a>
----------	--

### Key

Open to all (inc NHS, social care, primary care)

Open to specific groups



We are  
**a team**

# SOUTH EAST LEADERSHIP ACADEMY DEVELOPMENT OPPORTUNITIES – JULY 2022



At the South East Leadership Academy we have commissioned, curated and categorised a range of support to help nourish, retain and engage our people. See below for our current and upcoming offers. For all sessions please click on the links below or visit <https://se.leadershipacademy.nhs.uk/>

## LEADERSHIP DEVELOPMENT & COACHING/MENTORING

1 <sup>st</sup> July	<a href="#">Leadership Espresso – Bringing Teams back together to Reset, Renew &amp; Refocus</a>
5th July	<a href="#">Supporting you with meaningful mediation skills</a>
7th July	<a href="#">Keep Building Resilience CPD</a>
7th July	<a href="#">Virtual group supervision for coaches with Will Jackson</a>
14th July	<a href="#">Coaching Supervision</a>
20 <sup>th</sup> July	<a href="#">South East Leadership Academy OD Innovation Network</a>

## SYSTEMS LEADERSHIP

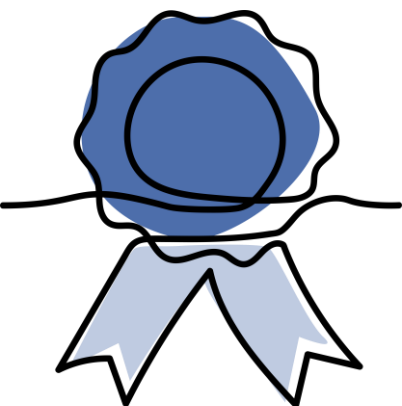
<a href="#">Expert facilitation – ICS transformation leaders</a>
<a href="#">System leadership behaviours – toolkit</a>
<a href="#">Executive Suite</a>
<a href="#">Action Learning Set – ICS transformation leaders</a>
<a href="#">Personalised Executive Support</a>

## OFFERS FOR PRIMARY CARE

Coming soon
-------------

## GRADUATE MANAGEMENT TRAINING SCHEME

TBC	Alumni Network Event: Date coming soon
-----	--



Key	
	Open to all (inc NHS, social care, primary care)
	Open to specific groups

We are **recognised**  
and **rewarded**

# SOUTH EAST LEADERSHIP ACADEMY - ADDITIONAL OFFERS



At the South East Leadership Academy we have commissioned, curated and categorised a range of support to help nourish, retain and engage our people. See below for our current and upcoming offers. For all sessions please click on the links below or visit <https://se.leadershipacademy.nhs.uk/>

## ONGOING OFFERS – AVAILABLE THROUGHOUT THE YEAR

Coaching & Mentoring	<a href="#">Crisis Coaching</a> An opportunity to process experiences, develop coping skills and explore strategies to navigate challenging circumstances
	<a href="#">Access to a Coach or Mentor</a> Coaching and mentoring is an inclusive, free offering available to all.
	<a href="#">Executive Coaching – Expert Coaching</a> This one to one focused and bespoke relationship is often perceived as the most effective development intervention that a senior leader can access.
Leadership Development	<a href="#">Bitesize Learning – Shorts &amp; Bites</a> Our bitesize learning interventions are short, sharp and agile, with the ability to be accessed whenever its convenient for you.
	<a href="#">Looking after our people</a> Concise tips, resources and signposting to help you find the right support for you and your teams for right now and beyond.
	<a href="#">Edward Jenner</a> Refreshed: Your first port of call if you're looking to build a strong foundation of leadership skills

## KEEP AN EYE OUT FOR

Leadership programme exploring the *scale and spread for innovation*

## WHAT ELSE?

### Our System OD Work

We are currently supporting a number of ICS's with facilitated support to develop leadership for effective provider collaboratives and to develop clinically driven cultures. Please contact [beth.hill@leadershipacademy.nhs.uk](mailto:beth.hill@leadershipacademy.nhs.uk) to find out more

### Collaborative Practice

We are currently supporting 12 GP Practices across the South East through the Innovative [Collaborative Practice](#) programme to find a new way of organising to manage demand and improve outcomes. To find out more about the programme and understand how you can get involved in the lessons coming out from it, please contact [Jayne.beresford@leadershipacademy.nhs.uk](mailto:Jayne.beresford@leadershipacademy.nhs.uk)

### ICS Collaboration

We are currently supporting each ICS with local place-based offers and the development of effective Integrated Care Boards and further transition support. Please contact [ali.jennings@leadershipacademy.nhs.uk](mailto:ali.jennings@leadershipacademy.nhs.uk) to find out more

### Developing the South East Regional Talent & Leadership Alliance and ICS Talent and Leadership Alliances

We are working across the region and in each ICS to support collaboration and partnerships that maximise the impact of all of our leadership and talent offers at organisation, place and system. Contact [ali.jennings@leadershipacademy.nhs.uk](mailto:ali.jennings@leadershipacademy.nhs.uk) to find out more