

# SOUTH EAST LEADERSHIP ACADEMY DEVELOPMENT OPPORTUNITIES – DECEMBER 2021



At the South East Leadership Academy we have commissioned, curated and categorised a range of support to help nourish, retain and engage our people. See below for our current and upcoming offers. For all sessions please click on the links below or visit <https://se.leadershipacademy.nhs.uk/> Each of our offers have been linked back to either a webpage, or a key contact within the team for more information

## LEADERSHIP DEVELOPMENT & COACHING/MENTORING

7 <sup>th</sup> Dec	<a href="#">Espresso: Giving and receiving effective feedback</a>
8 <sup>th</sup> Dec	<a href="#">Coaching Supervisor Supervision: Lean and impactful</a>
8 <sup>th</sup> Dec	<a href="#">Espresso: Understanding Trauma in healthcare</a>
8 <sup>th</sup> Dec	<a href="#">Espresso: Supporting your team when noticing burnout</a>
8 <sup>th</sup> Dec	<a href="#">Espresso: Our Leadership Way</a>
14 <sup>th</sup> Dec	<a href="#">Medical Support Workers Network</a>
14 <sup>th</sup> Dec	<a href="#">Coaching CPD: Building Resilience</a>

## SYSTEMS LEADERSHIP

<a href="#">Applications open: Mary Seacole local facilitator training</a>
<a href="#">Expert facilitation – ICS transformation leaders</a>
<a href="#">System leadership behaviours – toolkit</a>
<a href="#">Executive Suite</a>
<a href="#">Action Learning Set – ICS transformation leaders</a>
<a href="#">Personalised Executive Support</a>
<a href="#">#Winter Warmers – Coffee connection for team leaders &amp; managers</a>

### Key

Open to all (inc NHS, social care, primary care)

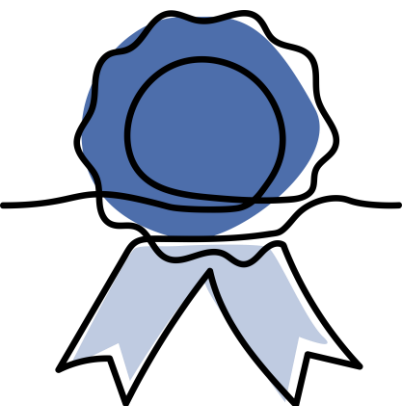
Open to specific groups

## OFFERS FOR PRIMARY CARE STAFF

Offers available in January & February

## GRADUATE MANAGEMENT TRAINING SCHEME

8 <sup>th</sup> Dec	<a href="#">GMTS Engagement event</a>
17 <sup>th</sup> Dec	<a href="#">GMTS Engagement event</a>



We are **recognised**  
and **rewarded**

# SOUTH EAST LEADERSHIP ACADEMY DEVELOPMENT OPPORTUNITIES – JANUARY 2022



At the South East Leadership Academy we have commissioned, curated and categorised a range of support to help nourish, retain and engage our people. See below for our current and upcoming offers. For all sessions please click on the links below or visit <https://se.leadershipacademy.nhs.uk/> Each of our offers have been linked back to either a webpage, or a key contact within the team for more information

## LEADERSHIP DEVELOPMENT & COACHING/MENTORING

12 <sup>th</sup> Jan	<a href="#">Espresso: Wellbeing looking after yourself and your teams</a>
13 <sup>th</sup> Jan	<a href="#">Espresso: Mindout – LGBTQ Identities &amp; Mental Health</a>
13 <sup>th</sup> Jan	<a href="#">Coach Supervision: Developing a coaching culture programme</a>
17 <sup>th</sup> Jan	<a href="#">Espresso: Hybrid working</a>
18 <sup>th</sup> Jan	<a href="#">Coaching CPD: Coaching in Crisis</a>
19 <sup>th</sup> Jan	<a href="#">Espresso: Leading through the Winter</a>
20 <sup>th</sup> Jan	<a href="#">Espresso: Mindout – Privilege, minority stress &amp; intersectionality</a>
25 <sup>th</sup> Jan	<a href="#">Coaching CPD: Coaching in a crisis</a>
26 <sup>th</sup> Jan	<a href="#">Espresso: Challenging Conversations</a>
26 <sup>th</sup> Jan	<a href="#">Espresso: Supporting the Talent in your Team</a>
27 <sup>th</sup> Jan	<a href="#">Espresso: Mindout – Trans Inclusion</a>

## SYSTEMS LEADERSHIP

<a href="#">Applications open: Mary Seacole local facilitator training</a>
<a href="#">Expert facilitation – ICS transformation leaders</a>
<a href="#">System leadership behaviours – toolkit</a>
<a href="#">Executive Suite</a>
<a href="#">Action Learning Set – ICS transformation leaders</a>
<a href="#">Personalised Executive Support</a>
<a href="#">#Winter Warmers – Coffee connection for team leaders &amp; managers</a>

## OFFERS FOR PRIMARY CARE

14 <sup>th</sup> Jan	<a href="#">Facilitated Learning Sets for PCN Managers – Group 1</a>
14 <sup>th</sup> Jan	<a href="#">Facilitated Learning Sets for PCN Managers – Group 2</a>
18 <sup>th</sup> Jan	<a href="#">Supporting yourself and your teams</a>
26 <sup>th</sup> Jan	<a href="#">Primary Care: Sustaining a Good Team Culture</a>

## GRADUATE MANAGEMENT TRAINING SCHEME

11 <sup>th</sup> Jan	<a href="#">GMTS Engagement event</a>
20 <sup>th</sup> Jan	<a href="#">GMTS Engagement event</a>
25 <sup>th</sup> Jan	<a href="#">GMTS Engagement event</a>

### Key

- Open to all (inc NHS, social care, primary care)
- Open to specific groups

We each have  
**a voice that counts**

# SOUTH EAST LEADERSHIP ACADEMY DEVELOPMENT OPPORTUNITIES – FEBRUARY 2022



At the South East Leadership Academy we have commissioned, curated and categorised a range of support to help nourish, retain and engage our people. See below for our current and upcoming offers. For all sessions please click on the links below or visit <https://se.leadershipacademy.nhs.uk/> Each of our offers have been linked back to either a webpage, or a key contact within the team for more information

## LEADERSHIP DEVELOPMENT & COACHING/MENTORING

2 <sup>nd</sup> Feb	<a href="#">Coaching Supervisor Supervision: Lean and impactful</a>
2 <sup>nd</sup> Feb	<a href="#">Conversations to Build Resilience (part 2)</a>
3 <sup>rd</sup> Feb	<a href="#">Espresso: Acknowledge the Hurt</a>
8 <sup>th</sup> Feb	<a href="#">Espresso: Supporting your Team when Noticing Burnout</a>
8 <sup>th</sup> Feb	<a href="#">Espresso: Reset, renew and refocus</a>
10 <sup>th</sup> Feb	<a href="#">Espresso: Giving and Receiving Effective Feedback</a>
10 <sup>th</sup> Feb	<a href="#">Espresso: Leading through the Winter</a>
16 <sup>th</sup> Feb	<a href="#">Coaching CPD: Coaching in a Crisis</a>
22 <sup>nd</sup> Feb	<a href="#">Mentoring CPD: Mentoring in a Crisis</a>
21 <sup>st</sup> Feb	<a href="#">Espresso: Making Every Conversation Count</a>
23 <sup>rd</sup> Feb	<a href="#">Espresso: Sustaining a Good Team Culture</a>
24 <sup>th</sup> Feb	<a href="#">Coaching CPD: Personal Success – the mindset to thrive</a>
28 <sup>th</sup> Feb	<a href="#">Espresso: The Art of Being Brilliant</a>

## SYSTEMS LEADERSHIP

<a href="#">Expert facilitation – ICS transformation leaders</a>
<a href="#">System leadership behaviours – toolkit</a>
<a href="#">Executive Suite</a>
<a href="#">Action Learning Set – ICS transformation leaders</a>
<a href="#">Personalised Executive Support</a>

## OFFERS FOR PRIMARY CARE

9 <sup>th</sup> Feb	<a href="#">Primary Care: Supporting yourself and your team</a>
22 <sup>nd</sup> Feb	<a href="#">Ways of Thinking about Change</a>

## GRADUATE MANAGEMENT TRAINING SCHEME

1 <sup>st</sup> Feb	<a href="#">GMTS Engagement event</a>
---------------------	---------------------------------------

### Key

	Open to all (inc NHS, social care, primary care)
	Open to specific groups

# SOUTH EAST LEADERSHIP ACADEMY - ADDITIONAL OFFERS



At the South East Leadership Academy we have commissioned, curated and categorised a range of support to help nourish, retain and engage our people. See below for our current and upcoming offers. For all sessions please click on the links below or visit <https://se.leadershipacademy.nhs.uk/> Each of our offers have been linked back to either a webpage, or a key contact within the team for more information

## ONGOING OFFERS – AVAILABLE THROUGHOUT THE YEAR

Coaching & Mentoring	<p><a href="#">Crisis Coaching</a> An opportunity to process experiences, develop coping skills and explore strategies to navigate challenging circumstances</p>
	<p><a href="#">Access to a Coach or Mentor</a> Coaching and mentoring is an inclusive, free offering available to all.</p>
	<p><a href="#">Executive Coaching – Expert Coaching</a> This one to one focused and bespoke relationship is often perceived as the most effective development intervention that a senior leader can access.</p>
	<p><a href="#">Safe Space conversations</a> For senior clinical leaders these conversations will offer the opportunity to reset, bolster resilience, reinforce leadership skills and enhance personal effectiveness.</p>
Leadership Development	<p><a href="#">Bitesize Learning – Shorts &amp; Bites</a> Our bitesize learning interventions are short, sharp and agile, with the ability to be accessed whenever its convenient for you.</p>
	<p><a href="#">Looking after our people</a> Concise tips, resources and signposting to help you find the right support for you and your teams for right now and beyond.</p>
	<p><a href="#">Edward Jenner</a> your first port of call if you're looking to build a strong foundation of leadership skills</p>

## KEEP AN EYE OUT FOR

Leadership programme exploring the *scale and spread for innovation*

Next instalment for system leaders following on from our very successful *Leading for transformation in 2022*

## WHAT ELSE?

### Our System OD Work

We are currently supporting a number of ICS's with facilitated support to develop leadership for effective provider collaboratives and to develop clinically driven cultures. Please contact [beth.hill@leadershipacademy.nhs.uk](mailto:beth.hill@leadershipacademy.nhs.uk) to find out more

### Collaborative Practice

We are currently supporting 12 GP Practices across the South East through the Innovative [Collaborative Practice](#) programme to find a new way of organising to manage demand and improve outcomes. To find out more about the programme and understand how you can get involved in the lessons coming out from it, please contact [Jayne.beresford@leadershipacademy.nhs.uk](mailto:Jayne.beresford@leadershipacademy.nhs.uk)

### ICS Collaboration

We are currently supporting each ICS with local place-based offers and the development of effective Integrated Care Boards and further transition support. Please contact [ali.jennings@leadershipacademy.nhs.uk](mailto:ali.jennings@leadershipacademy.nhs.uk) to find out more

### Developing the South East Regional Talent & Leadership Alliance and ICS Talent and Leadership Alliances

We are working across the region and in each ICS to support collaboration and partnerships that maximise the impact of all of our leadership and talent offers at organisation, place and system. Contact [Beth.Hill@leadershipacademy.nhs.uk](mailto:Beth.Hill@leadershipacademy.nhs.uk) to find out more